



Happenings Spring/Summer 2017

News for and about RTC/CL Partners,
Advisors and Stakeholders

Success Stories: Community Partners Share Experiences Implementing Research



Collaboration with community partners has been essential to testing the interventions conducted by the Research and Training Center on Community Living.

Now, we are sharing [success stories from five of these community partners](#), each of whom participated in our Community Living Summit last September.

Our [Summit webpage](#) also includes a video of each presentation, featuring the project researcher(s), the community member who took part in implementing the intervention, and a member of our Scientific and Consumer Advisory Panel.

Partners Edit Special Journal Issue

Glen White and Jean Ann Summers edited a special issue of the *Journal of Prevention & Intervention in the Community* titled [“People with Disabilities and Community Participation.”](#) The five studies included in this issue examine community participation from multiple angles, with a focus on improving the lives of people with existing disabilities and those who are aging into disability. Authors are researchers from our RTC on Community Living and previous NIDILRR-funded centers. [Read the story.](#)

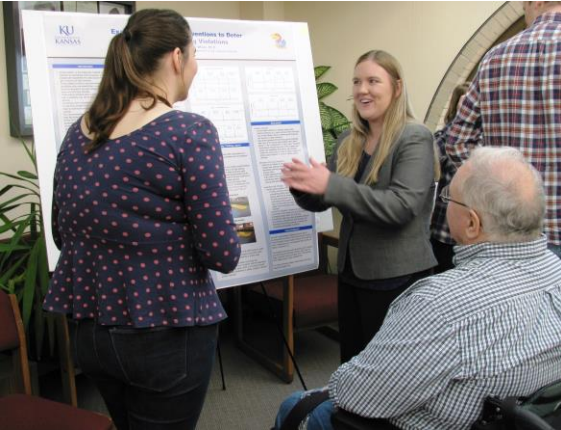
Senator Bob Dole Makes Gift to RTC/IL

Senator Bob Dole has made a gift of \$10,000 to the University of Kansas Research and Training Center on Independent Living (RTC/IL). Senator Dole played an integral role in the 1990 passage of the Americans with Disabilities Act (ADA) and has a physical disability himself. He was interested in supporting the Center because of his long-standing interest in and advocacy on behalf of Americans with disabilities. [Read the story.](#)

Hodgesmith Supports Elizabeth Dole Lecture Series

Martha Hodgesmith with the John E. McElroy Trust has helped make possible the Senator Elizabeth Dole Women in Leadership Lecture at KU’s Robert J. Dole Institute of Politics. The series promotes the advancement of women to positions of leadership and empowers future generations of women who aspire to leadership and civil service. [Read the story.](#)

Kudos! Milestones and Honors



Graduate research assistant Kelsey Shinnick successfully defended her Master's thesis on Jan. 27. Her study is titled “Examining Multiple Interventions to Deter Access Aisle Parking Violations.” A fact sheet is coming soon!

In this photo, Shinnick (*center*) discusses a poster about her study at the Applied Behavioral Science 2017 Poster Fair, which the RTC/IL cosponsors. Her thesis advisor Glen White has his back to the camera.

Sara Ranier was one of the University of New Hampshire team members who received the Roger A. Ritvo Award from the UNH College of Health & Human Services. This joint award is given to a faculty member and graduate student who have engaged in a collaborative research or service project outside the classroom.

New Resource on Accessible Parking Etiquette

The [brochure](#) “Accessible Parking Etiquette: Honor the Aisles!” informs all drivers about the purpose of access aisles, including those who have accessible parking permits but may not need the van-accessible parking space. Glen White has worked with the Kansas Department of Revenue to disseminate this brochure to people applying for or renewing accessible parking permits, as well as to those renewing their driver’s license.

“Engaged”: RTC/IL Featured in Library Exhibition



The KU RTC is one of 14 programs featured in the University of Kansas Libraries exhibition “Engaged: Campus and community scholars working together for the public good.” The exhibit, open through August, highlights work that is committed to creating reciprocal and mutually beneficial community-based scholarship.

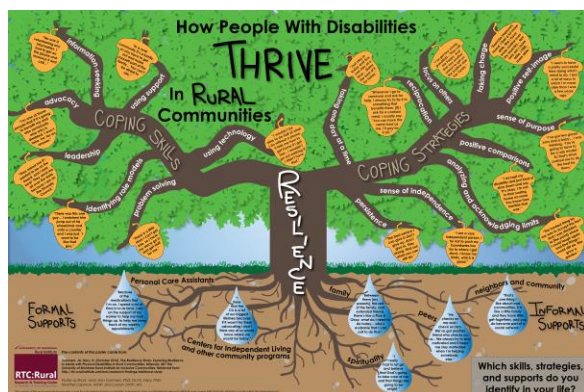
The RTC display features our commitment to participatory action research and integrated knowledge translation. In photo, Martha Hodgesmith (left) discusses the exhibit at the opening event in January.

Publications ... and Citations

Jessica Dashner and coauthors Hollingsworth, H., Gross, J. and Gray, DB, published “Environmental determinants of quality of participation in healthcare settings among people with impairments and limitations” in the book *Participation in Health and Welfare Services: Professional Concepts and Lived Experience* (pp. 41-52), 2017, New York, NY: Routledge.

An article by Amanda Reichard is the second [“Most Cited”](#) article in the history of *Disability and Health Journal* (see middle column). She published [Health disparities among adults with physical disabilities or cognitive limitations compared to individuals with no disabilities in the United States](#) in 2011 with coauthors Hayley Stolzle and Michael Fox.

Presentations



Jean Ann Summers presented the poster “How People with Disabilities Thrive in Rural Communities” at the National Association of Rehabilitation Research and Training Centers (NARRTC) conference in March (*see photo*).

She displayed the preliminary results of The Resilience Study, a collaboration between the University of Montana’s RTC on Disability in Rural Communities and KU’s RTC/IL. [Read the story.](#)

Martha Hodgesmith was a respondent for a NARRTC Conference keynote address by Jean Slutsky, PA, MSPH, Chief Engagement and Dissemination Officer of the PCORI Executive Team, in March. The presentation on “End-user Engagement in Research and Getting Research into Practice” focused on general issues related to knowledge translation and dissemination.

In March, Dot Nary gave a lecture on accessible health care to 12 University of Texas public health graduate students. She connected with classes on three UT campuses through an online platform.

She was also a panelist in the Lawrence, KS, event “Art of Conversation: Social Service/Social Justice” in March. She provided a perspective on disability, joining panelists from the local community mental health center, the Sexual Trauma and Abuse Care Center, Audio Reader, and other agencies working to build a more inclusive community.

Judith Gross made the following presentations at the Nebraska Transition Conference in February.

- “Engaging families as partners in the transition process” - Invited keynote presentation
- “Supported and customized employment options: expecting competitive employment is an option for all” - Invited breakout session
- “Understanding the transition experiences of Spanish-speaking families” - Invited breakout session

Jessica Dashner presented a poster titled “Development of a Self- Management Program for Parents with Spinal Cord Injury and Disease” at the American Occupational Therapy Association’s annual conference in April.

Sara Rainer presented a poster at the Active Living Research Conference on “Exploring barriers and enablers of active living among persons with disabilities” in February. The poster titled

“Physical activity participation at the nexus of social change” shared information about the Community Engagement Initiative as one enabling process.



Advocacy Works

Dot Nary has contributed to increased accessibility in the Lawrence, KS, City Commission meeting room. Nary spearheaded an advocacy effort that resulted in the city installing a height-adjustable podium in the meeting room (*see photo*). Now people who address the City Commissioners can see and be seen by all who are attending the meetings.

RTC on Community Living Team

Research Partners

The University of Kansas

Glen W. White, PhD, RTC/CL Director

Martha Hodgesmith, JD, Associate Director

Jean Ann Summers, PhD, Research Director

Dorothy (Dot) Nary, PhD

Jerry Schultz, PhD

Christina Holt, MA

Val Renault, MA

E “Alice” Zhang, MA

Kelsey Shinnick, MA

University of Illinois at Chicago

Fabricio Balcazar, PhD

University of Montana

Craig Ravesloot, PhD

Tom Seekins, PhD

Lillie Greiman, MA

Andrew Myers, MA

University of New Hampshire

Charles E. Drum, JD, PhD

Andrew Houtenville, PhD

Amanda Reichard, PhD

Sara Rainer, BS

Washington University in St. Louis
Jessica Dashner, OTD, OTR/L

Administration for Community Living, National Institute on Disability, Independent Living, and Rehabilitation Research (NIDILRR)
Pimjai Sudsawad, ScD

Scientific and Consumer Advisory Panel (SCAP)

Scientific Representatives

Tony Cahill
Catherine Graham
Margaret (Peg) Nosek
Phillip Rumrill

Consumer Representatives

Dara Baldwin
Gwen Gillenwater
Ron Garcia
Stan Holbrook
Bob Michaels
Jamie Simpson

We welcome your news and feedback. Contact Val Renault, vrenault@ku.edu, 785-864-0575

The contents of this publication were developed under a grant from the [National Institute on Disability, Independent Living, and Rehabilitation Research](#) (NIDILRR grant number 90RT5015). NIDILRR is a Center within the Administration for Community Living (ACL), Department of Health and Human Services (HHS). These contents do not necessarily represent the policy of NIDILRR, ACL, or HHS, and you should not assume endorsement by the Federal Government.